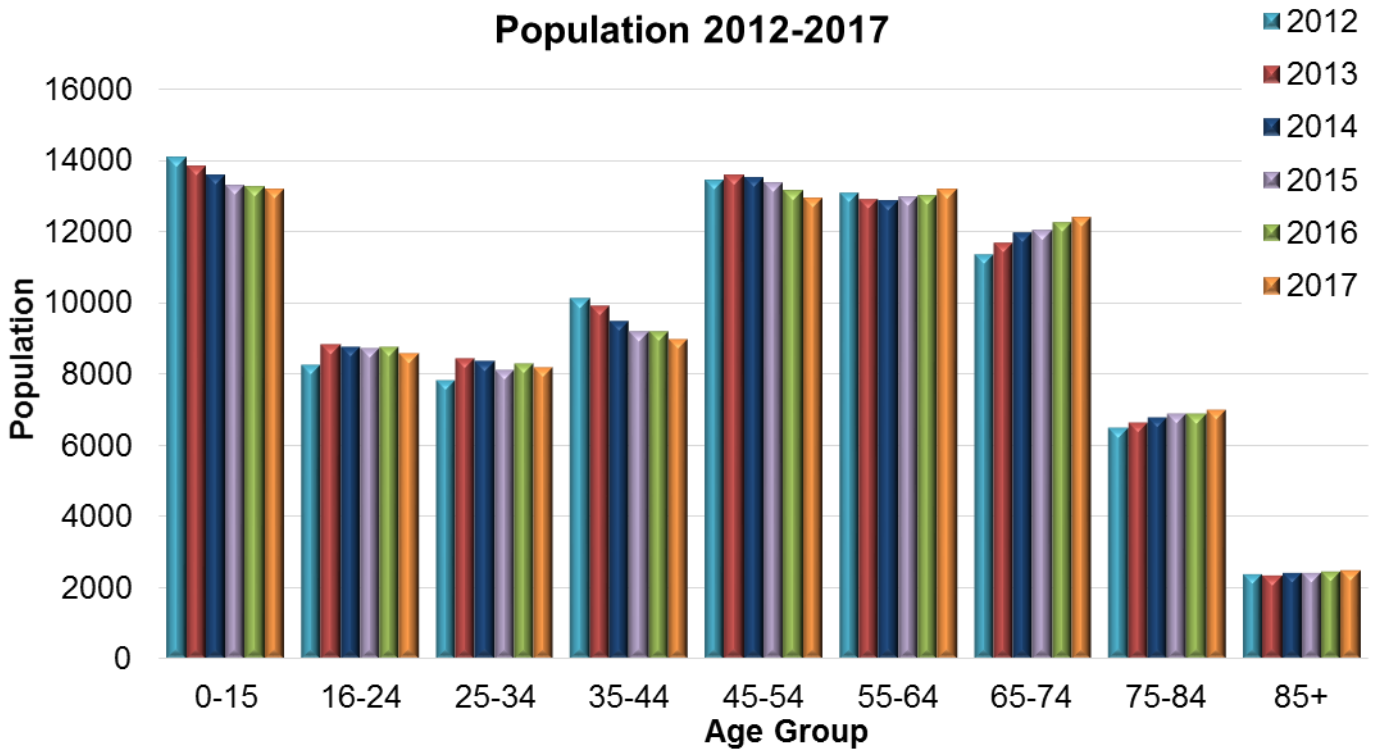
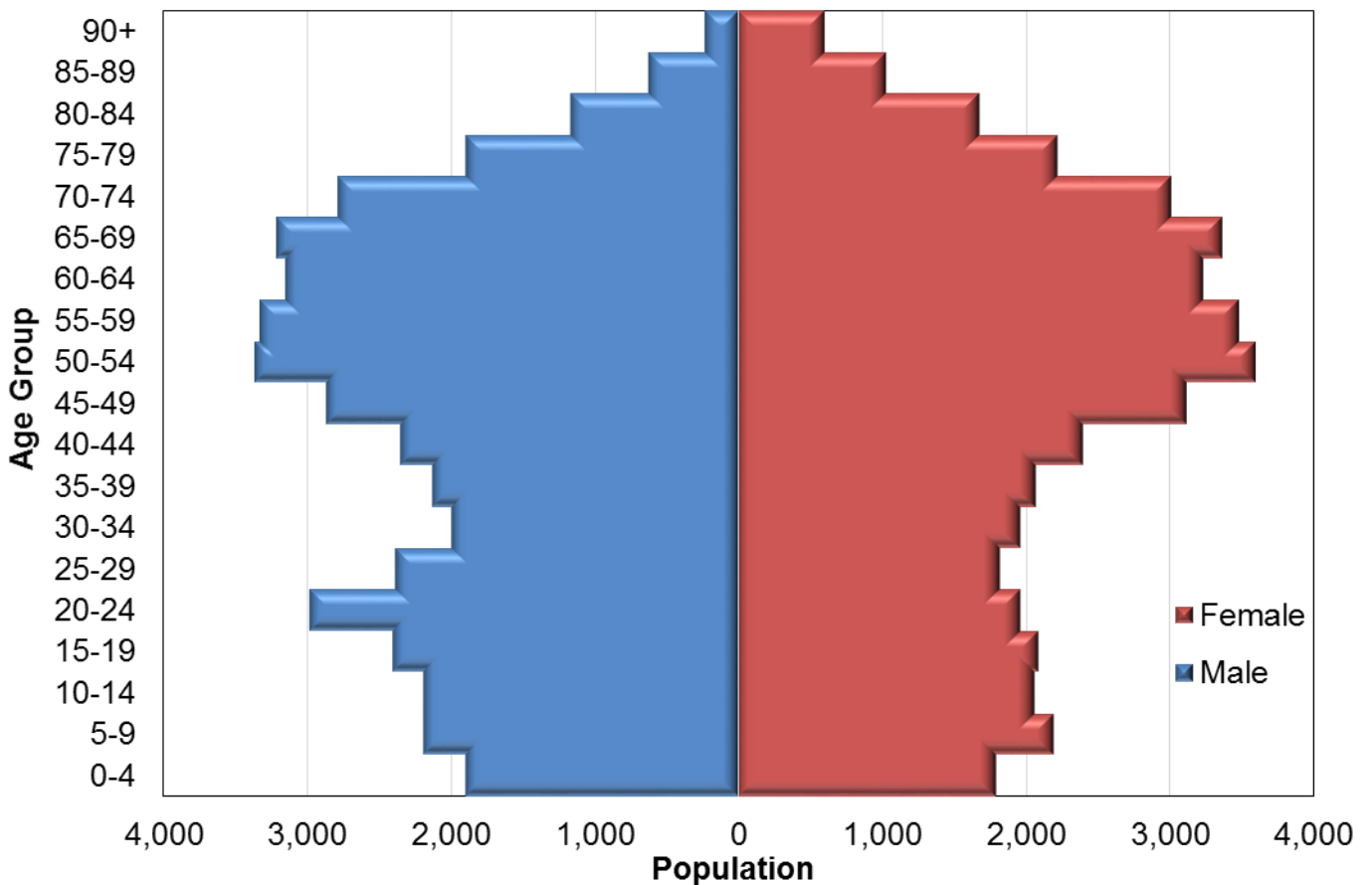


# Mid-year estimates of population size in Argyll and Bute

## Population 2012-2017



## 2017 Population



## Number of people by age band and year, in Argyll and Bute

| Age Band     | 2012         | 2013         | 2014         | 2015         | 2016         | 2017         |
|--------------|--------------|--------------|--------------|--------------|--------------|--------------|
| 0-15         | 14058        | 13814        | 13575        | 13292        | 13238        | 13163        |
| 16-24        | 8254         | 8806         | 8747         | 8705         | 8746         | 8581         |
| 25-34        | 7811         | 8416         | 8349         | 8110         | 8279         | 8160         |
| 35-44        | 10121        | 9907         | 9480         | 9170         | 9164         | 8948         |
| 45-54        | 13424        | 13587        | 13516        | 13340        | 13140        | 12939        |
| 55-64        | 13073        | 12889        | 12867        | 12949        | 13007        | 13182        |
| 65-74        | 11344        | 11655        | 11940        | 12020        | 12221        | 12370        |
| 75-84        | 6468         | 6635         | 6770         | 6883         | 6889         | 6971         |
| 85+          | 2357         | 2341         | 2406         | 2421         | 2446         | 2496         |
| <b>Total</b> | <b>86910</b> | <b>88050</b> | <b>87650</b> | <b>86890</b> | <b>87130</b> | <b>86810</b> |

## Number of people by 5-year age band and gender, in Argyll and Bute, 2017

| Age band     | Female       | Male         | Total        |
|--------------|--------------|--------------|--------------|
| 0-4          | 1797         | 1895         | 3692         |
| 5-9          | 2192         | 2187         | 4379         |
| 10-14        | 2062         | 2188         | 4250         |
| 15-19        | 2087         | 2401         | 4488         |
| 20-24        | 1960         | 2975         | 4935         |
| 25-29        | 1823         | 2386         | 4209         |
| 30-34        | 1961         | 1990         | 3951         |
| 35-39        | 2072         | 2127         | 4199         |
| 40-44        | 2400         | 2349         | 4749         |
| 45-49        | 3119         | 2860         | 5979         |
| 50-54        | 3599         | 3361         | 6960         |
| 55-59        | 3480         | 3327         | 6807         |
| 60-64        | 3232         | 3143         | 6375         |
| 65-69        | 3369         | 3207         | 6576         |
| 70-74        | 3007         | 2787         | 5794         |
| 75-79        | 2219         | 1900         | 4119         |
| 80-84        | 1680         | 1172         | 2852         |
| 85-89        | 1031         | 626          | 1657         |
| 90+          | 606          | 233          | 839          |
| <b>Total</b> | <b>43696</b> | <b>43114</b> | <b>86810</b> |

Source: National records of Scotland, 2018. Mid-2017 Small Area Population Estimates for 2011 Data Zones. [Online]

Available at: <https://www.nrscotland.gov.uk/statistics-and-data/statistics/statistics-by-theme/population/population-estimates/2011-based-special-area-population-estimates/small-area-population-estimates/mid-2017/detailed-data-zone-tables>

[Accessed 05 09 2018].