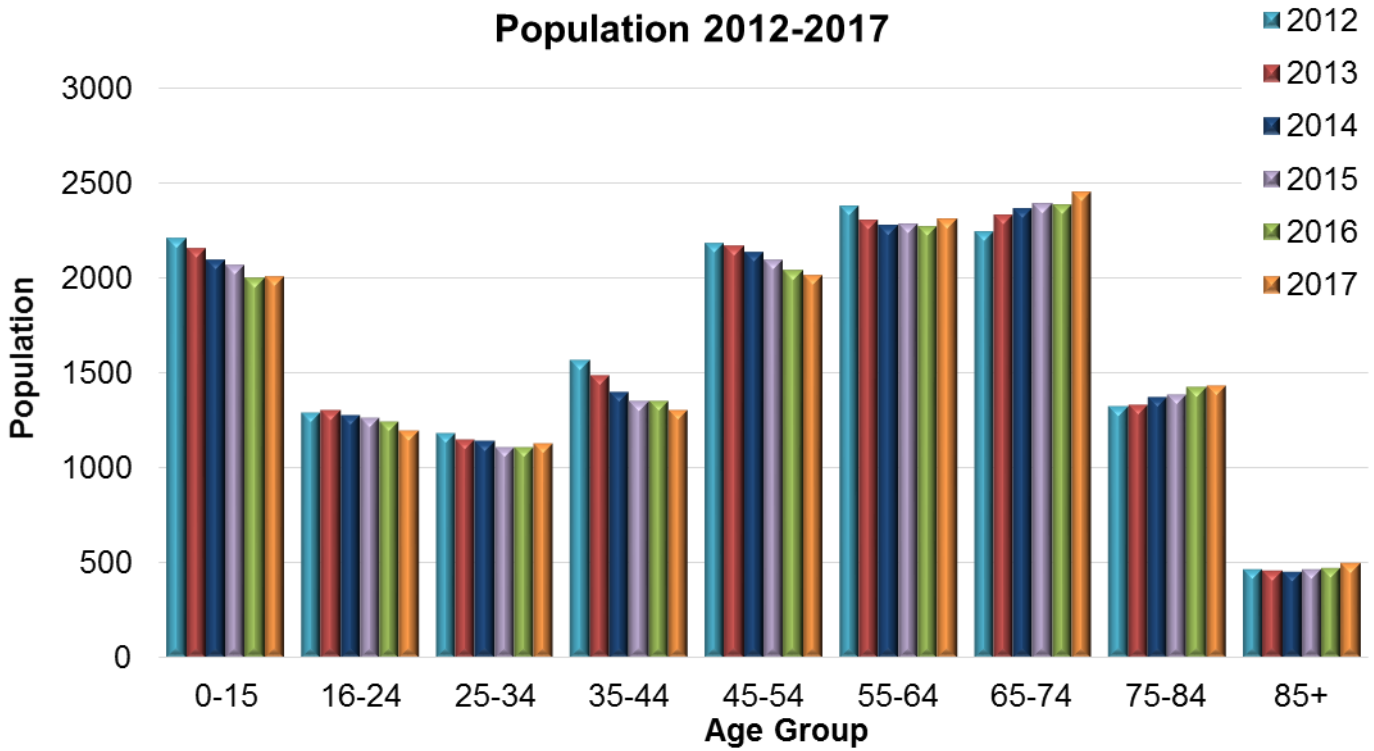
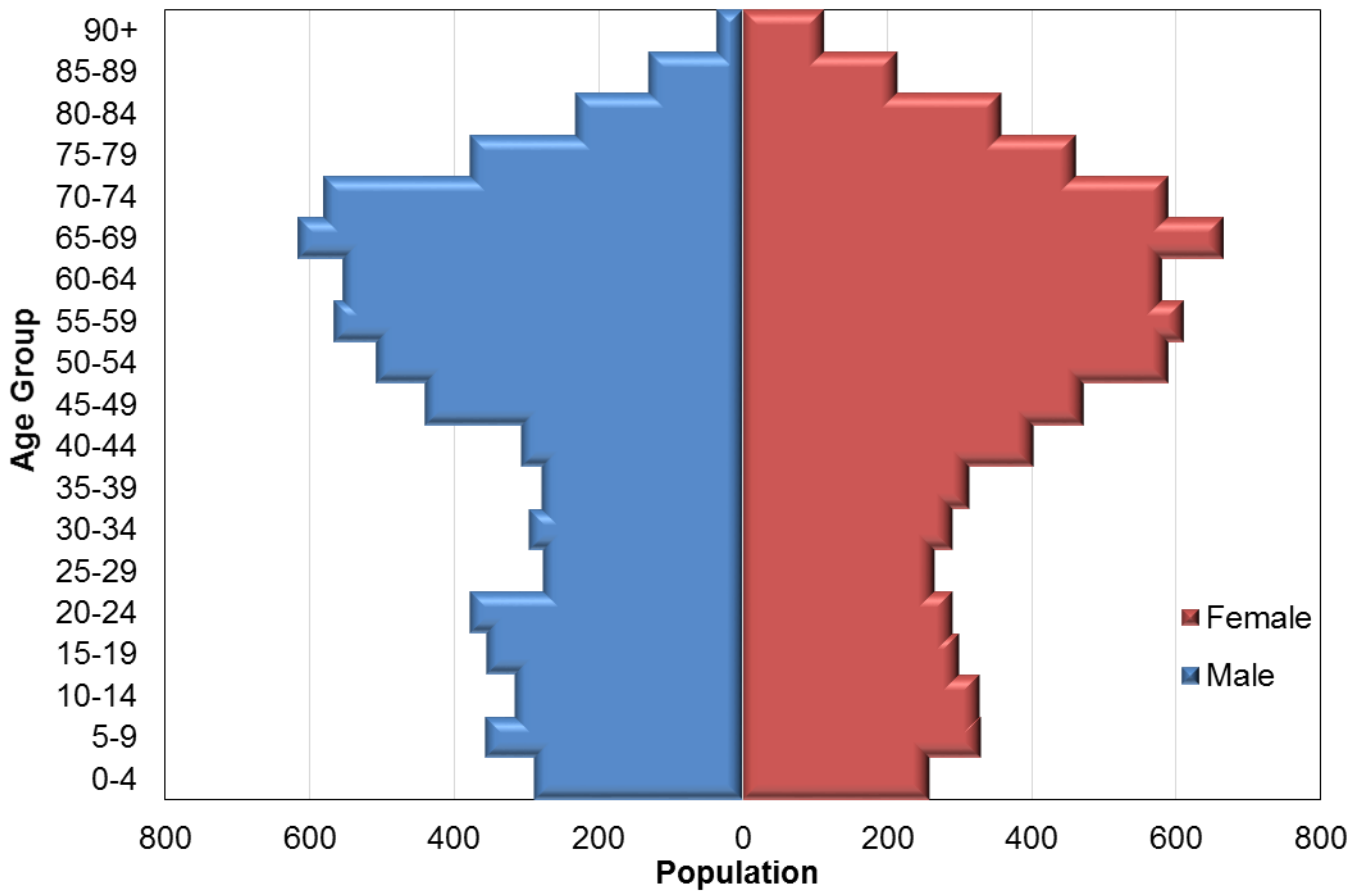


# Mid-year estimates of population size in Cowal



### 2017 Population



## Number of people by age band and year, in Cowal

Age Band	2012	2013	2014	2015	2016	2017
0-15	2206	2154	2091	2062	1999	2005
16-24	1286	1299	1278	1259	1241	1195
25-34	1178	1147	1143	1108	1106	1129
35-44	1569	1483	1397	1352	1347	1302
45-54	2177	2169	2133	2093	2039	2008
55-64	2379	2299	2275	2284	2267	2311
65-74	2242	2327	2361	2387	2381	2451
75-84	1325	1331	1372	1386	1427	1431
85+	468	459	454	465	469	497
<b>Total</b>	<b>14830</b>	<b>14668</b>	<b>14504</b>	<b>14396</b>	<b>14276</b>	<b>14329</b>

## Number of people by 5-year age band and gender, in Cowal, 2017

Age band	Female	Male	Total
0-4	260	288	548
5-9	330	356	686
10-14	328	315	643
15-19	301	354	655
20-24	291	377	668
25-29	267	276	543
30-34	291	295	586
35-39	314	278	592
40-44	404	306	710
45-49	473	439	912
50-54	589	507	1096
55-59	611	566	1177
60-64	580	554	1134
65-69	666	616	1282
70-74	590	579	1169
75-79	462	378	840
80-84	359	232	591
85-89	216	130	346
90+	114	37	151
<b>Total</b>	<b>7446</b>	<b>6883</b>	<b>14329</b>

Source: National records of Scotland, 2018. Mid-2017 Small Area Population Estimates for 2011 Data Zones. [Online]

Available at: <https://www.nrscotland.gov.uk/statistics-and-data/statistics/statistics-by-theme/population/population-estimates/2011-based-special-area-population-estimates/small-area-population-estimates/mid-2017/detailed-data-zone-tables>

[Accessed 05 09 2018].