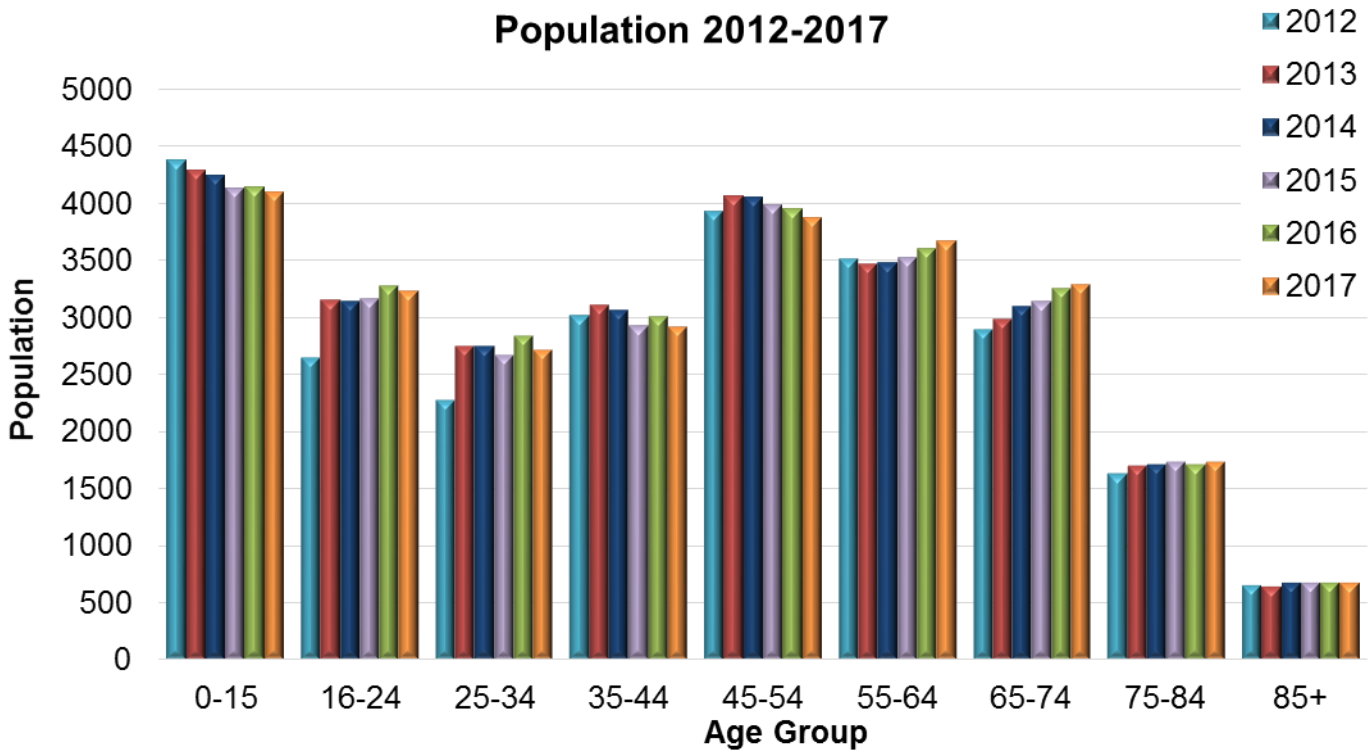
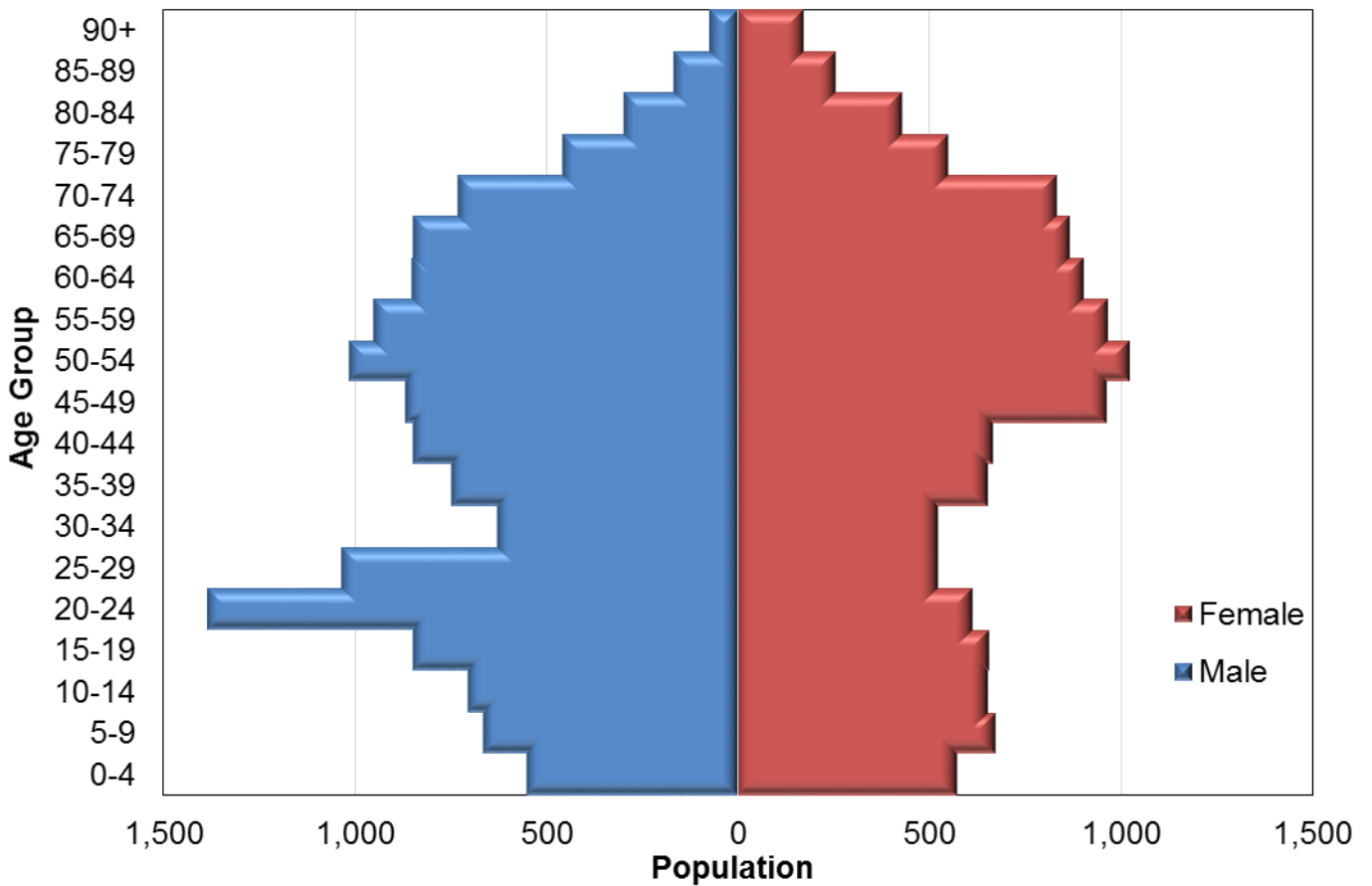


Mid-year estimates of population size in Helensburgh & Lomond

Population 2012-2017



2017 Population



Number of people by age band and year, in Helensburgh & Lomond

Age Band	2012	2013	2014	2015	2016	2017
0-15	4381	4290	4244	4125	4137	4096
16-24	2638	3149	3142	3159	3276	3224
25-34	2274	2750	2748	2665	2832	2711
35-44	3012	3110	3061	2928	3000	2913
45-54	3927	4061	4048	3986	3949	3864
55-64	3512	3460	3473	3523	3597	3669
65-74	2887	2985	3097	3141	3249	3279
75-84	1632	1700	1712	1735	1708	1734
85+	648	640	671	672	673	674
Total	24911	26145	26196	25934	26421	26164

Number of people by 5-year age band and gender, in Helensburgh & Lomond, 2017

Age band	Female	Male	Total
0-04	572	551	1123
05-09	672	666	1338
10-14	652	706	1358
15-19	657	847	1504
20-24	614	1383	1997
25-29	523	1035	1558
30-34	524	629	1153
35-39	652	747	1399
40-44	667	847	1514
45-49	964	866	1830
50-54	1021	1013	2034
55-59	965	951	1916
60-64	903	850	1753
65-69	867	848	1715
70-74	833	731	1564
75-79	549	457	1006
80-84	430	298	728
85-89	257	168	425
90+	174	75	249
Total	12496	13668	26164

Source: National records of Scotland, 2018. Mid-2017 Small Area Population Estimates for 2011 Data Zones. [Online]

Available at: <https://www.nrscotland.gov.uk/statistics-and-data/statistics/statistics-by-theme/population/population-estimates/2011-based-special-area-population-estimates/small-area-population-estimates/mid-2017/detailed-data-zone-tables>

[Accessed 05 09 2018].