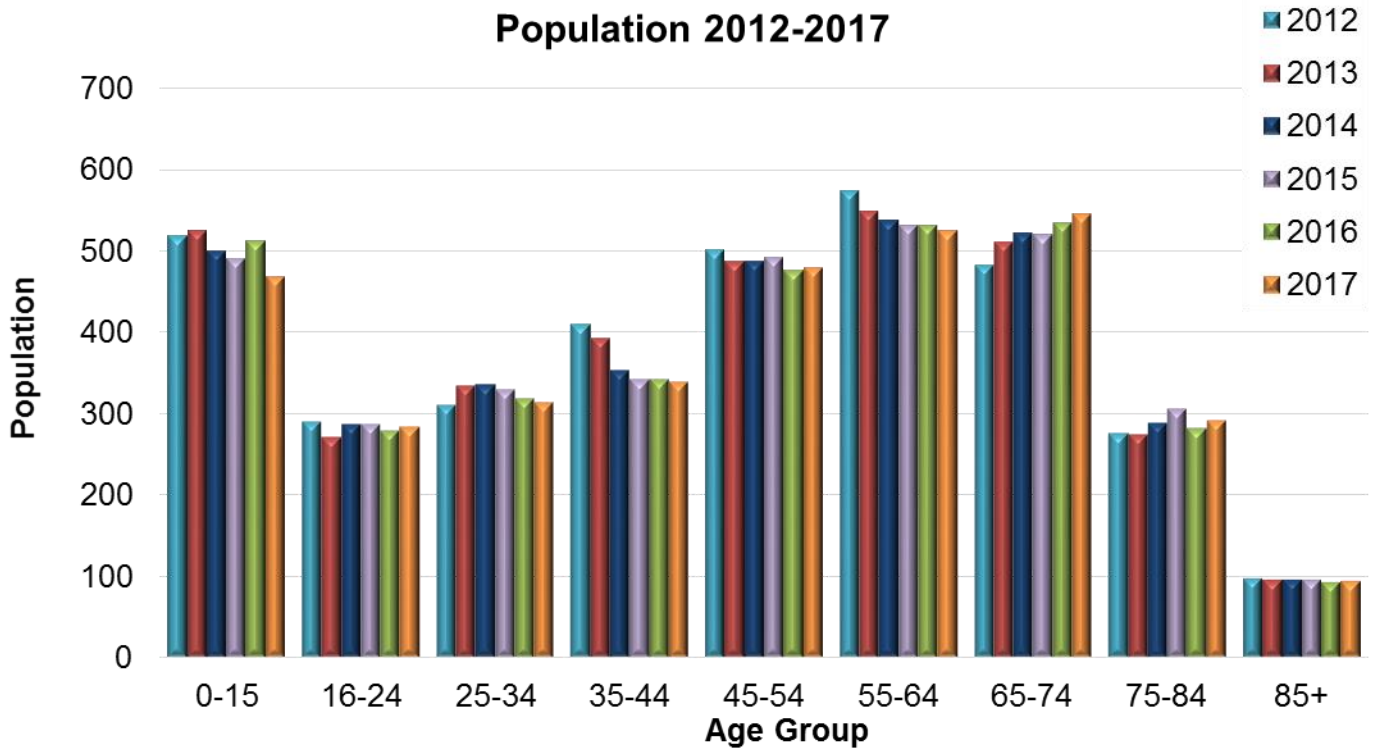
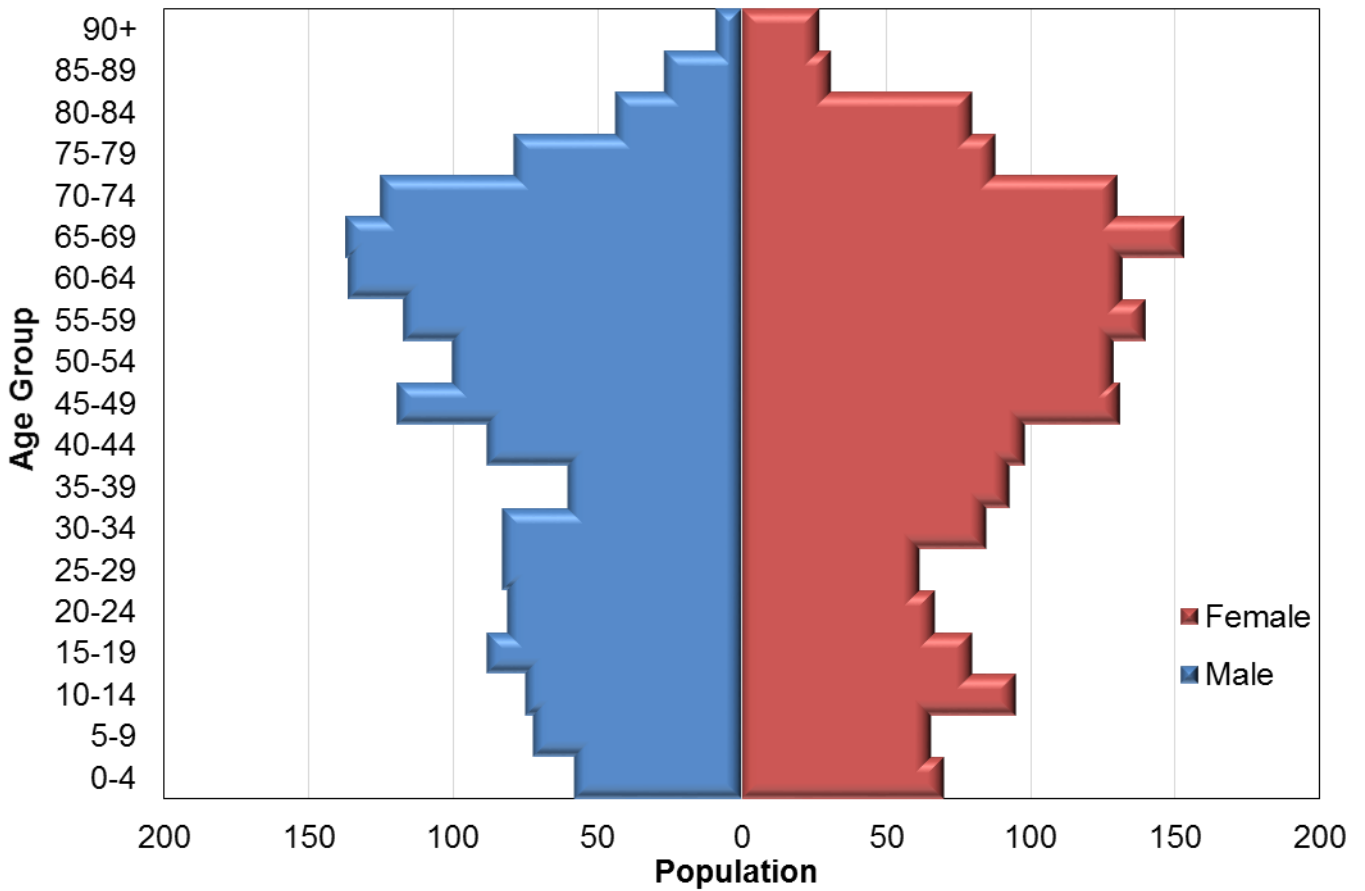


# Mid-year estimates of population size in Kintyre



### 2017 Population



## Number of people by age band and year, in Kintyre

Age Band	2012	2013	2014	2015	2016	2017
0-15	518	524	499	489	512	468
16-24	289	271	287	286	279	284
25-34	310	334	336	329	318	313
35-44	409	392	352	341	341	339
45-54	500	487	487	492	476	479
55-64	573	548	537	531	530	525
65-74	482	511	522	519	534	545
75-84	276	274	288	305	282	291
85+	98	96	96	96	93	94
<b>Total</b>	<b>3455</b>	<b>3437</b>	<b>3404</b>	<b>3388</b>	<b>3365</b>	<b>3338</b>

## Number of people by 5-year age band and gender, in Kintyre, 2017

Age band	Female	Male	Total
0-04	70	58	128
05-09	66	72	138
10-14	95	75	170
15-19	80	88	168
20-24	67	81	148
25-29	62	83	145
30-34	85	83	168
35-39	93	60	153
40-44	98	88	186
45-49	131	119	250
50-54	129	100	229
55-59	140	117	257
60-64	132	136	268
65-69	153	137	290
70-74	130	125	255
75-79	88	79	167
80-84	80	44	124
85-89	31	27	58
90+	27	9	36
<b>Total</b>	<b>1757</b>	<b>1581</b>	<b>3338</b>

Source: National records of Scotland, 2018. Mid-2017 Small Area Population Estimates for 2011 Data Zones. [Online]

Available at: <https://www.nrscotland.gov.uk/statistics-and-data/statistics/statistics-by-theme/population/population-estimates/2011-based-special-area-population-estimates/small-area-population-estimates/mid-2017/detailed-data-zone-tables>

[Accessed 05 09 2018].