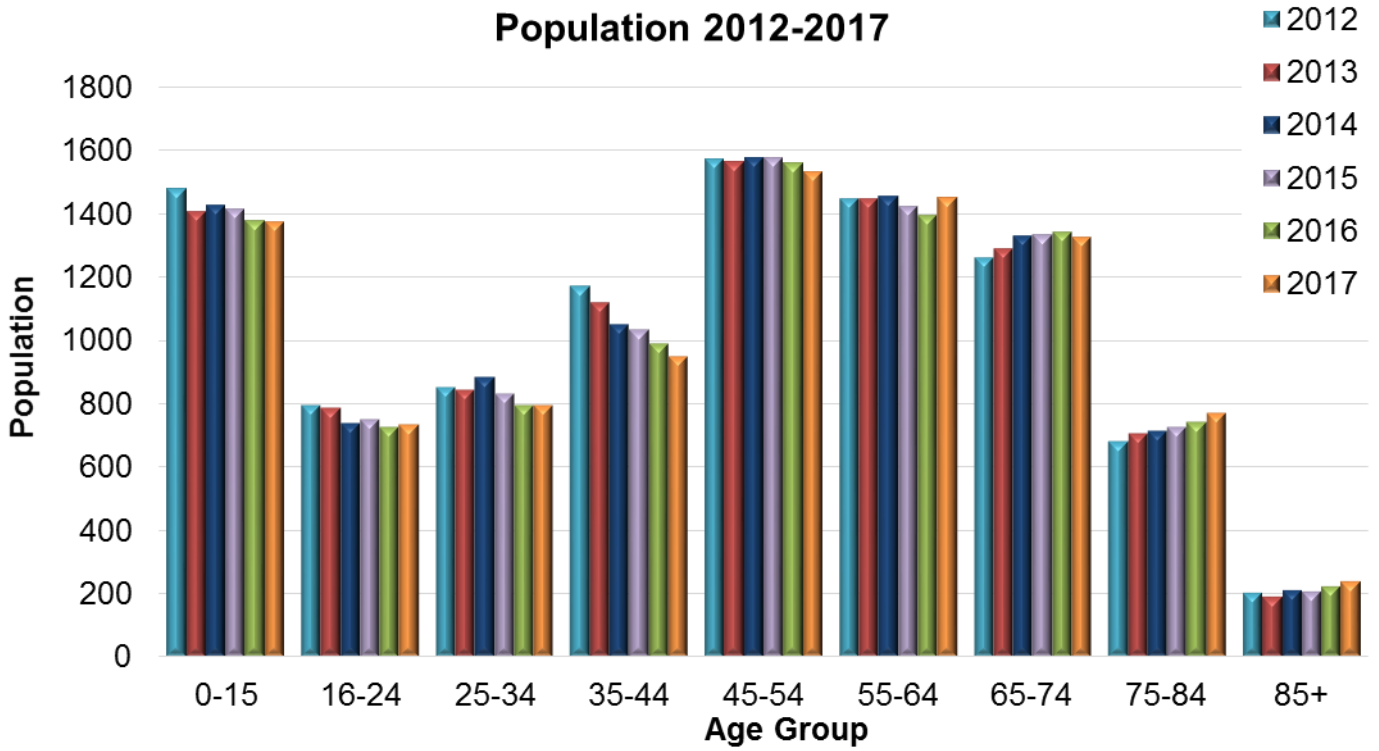
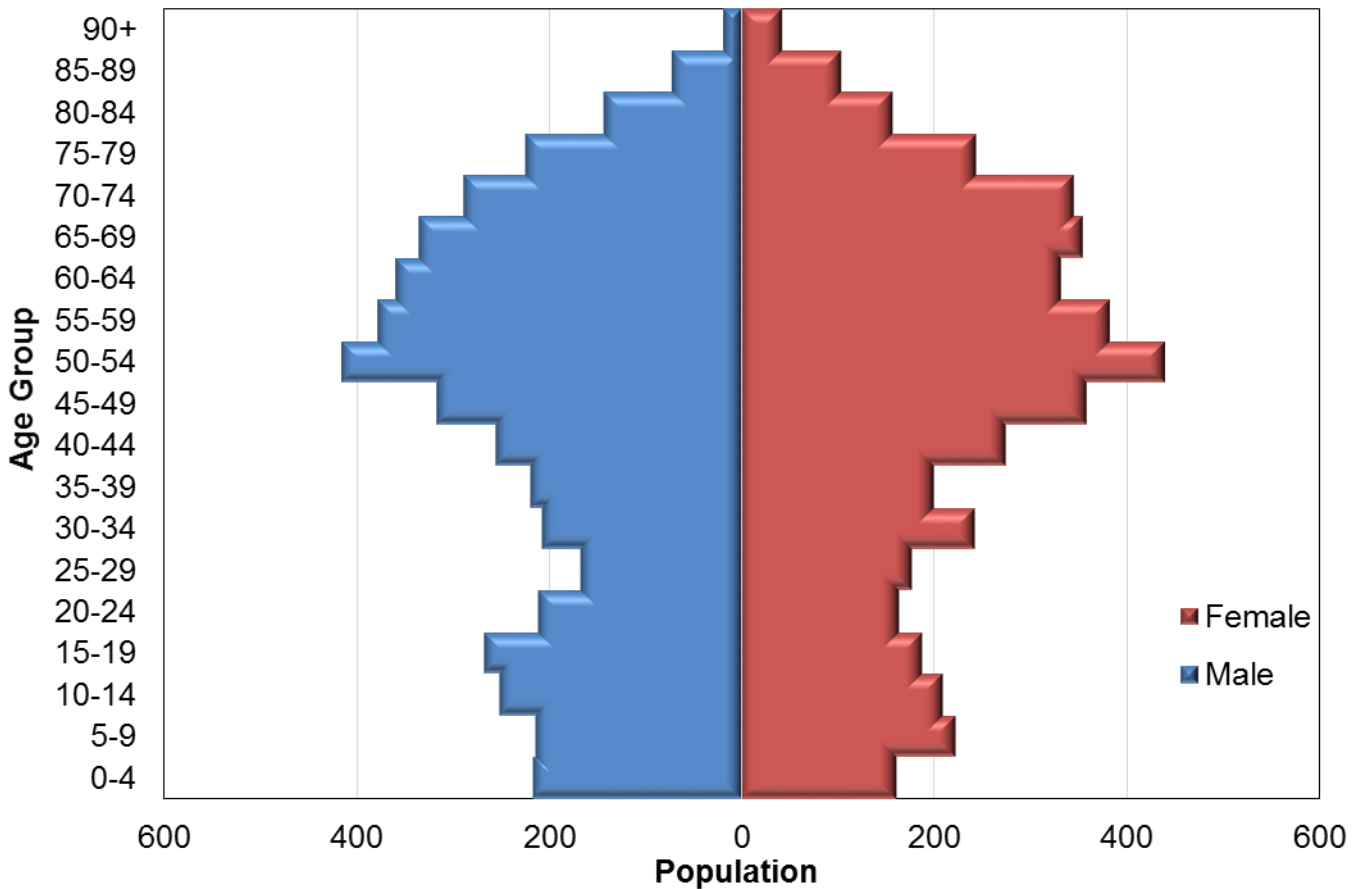


# Mid-year estimates of population size in Mid Argyll



### 2017 Population



## Number of people by age band and year, in Mid Argyll

Age Band	2012	2013	2014	2015	2016	2017
0-15	1479	1406	1426	1415	1376	1371
16-24	792	786	737	748	726	733
25-34	851	844	883	829	794	793
35-44	1169	1119	1048	1031	989	949
45-54	1570	1562	1576	1577	1560	1529
55-64	1446	1444	1452	1423	1391	1451
65-74	1260	1286	1329	1333	1339	1323
75-84	680	704	712	726	741	768
85+	202	189	209	205	221	240
<b>Total</b>	<b>9449</b>	<b>9340</b>	<b>9372</b>	<b>9287</b>	<b>9137</b>	<b>9157</b>

## Number of people by 5-year age band and gender, in Mid Argyll, 2017

Age band	Female	Male	Total
0-4	162	216	378
5-9	222	214	436
10-14	209	251	460
15-19	188	267	455
20-24	164	211	375
25-29	177	167	344
30-34	242	207	449
35-39	200	219	419
40-44	275	255	530
45-49	358	317	675
50-54	439	415	854
55-59	382	378	760
60-64	332	359	691
65-69	354	335	689
70-74	345	289	634
75-79	244	224	468
80-84	157	143	300
85-89	104	73	177
90+	43	20	63
<b>Total</b>	<b>4597</b>	<b>4560</b>	<b>9157</b>

Source: National records of Scotland, 2018. Mid-2017 Small Area Population Estimates for 2011 Data Zones. [Online]

Available at: <https://www.nrscotland.gov.uk/statistics-and-data/statistics/statistics-by-theme/population/population-estimates/2011-based-special-area-population-estimates/small-area-population-estimates/mid-2017/detailed-data-zone-tables>

[Accessed 05 09 2018].