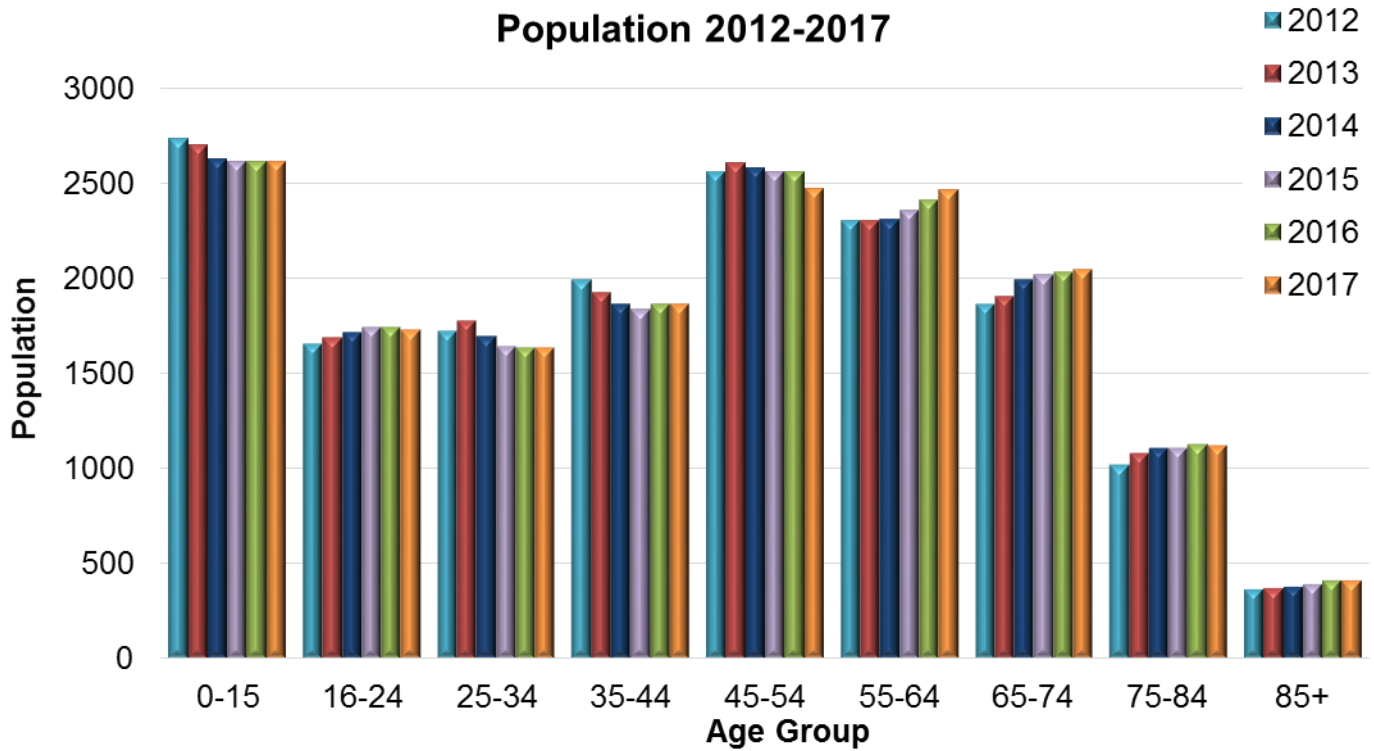
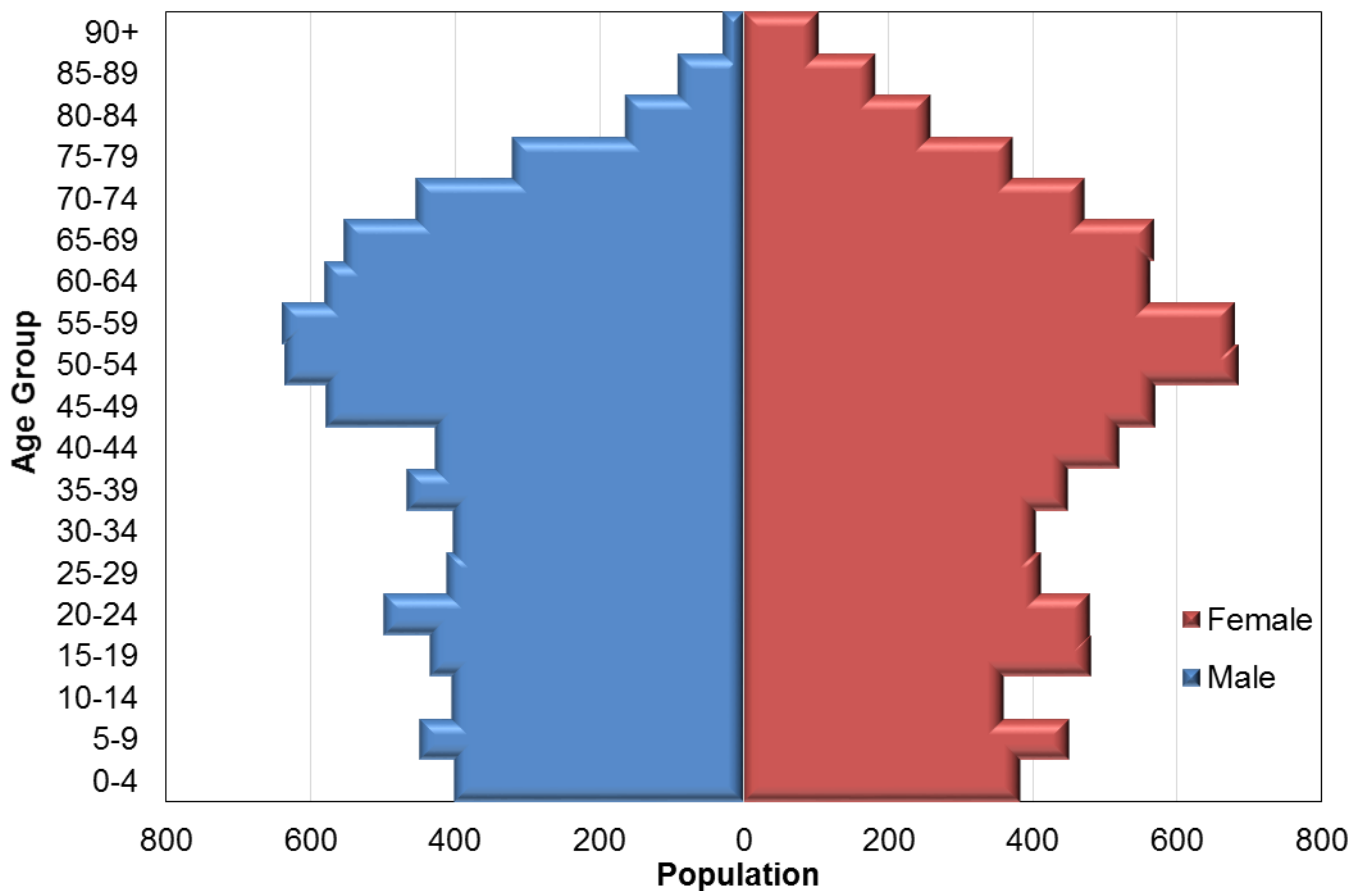


# Mid-year estimates of population size in Oban, Lorn and Inner Isles



### 2017 Population



## Number of people by age band and year, in Oban, Lorn and Inner Isles

Age Band	2012	2013	2014	2015	2016	2017
0-15	2734	2700	2628	2609	2614	2614
16-24	1652	1688	1712	1741	1744	1728
25-34	1723	1776	1696	1638	1636	1632
35-44	1988	1924	1862	1839	1865	1864
45-54	2561	2602	2579	2559	2555	2468
55-64	2299	2302	2309	2353	2411	2461
65-74	1866	1901	1990	2021	2034	2048
75-84	1019	1078	1106	1105	1125	1117
85+	365	371	377	391	410	410
<b>Total</b>	<b>16207</b>	<b>16342</b>	<b>16259</b>	<b>16256</b>	<b>16394</b>	<b>16342</b>

## Number of people by 5-year age band and gender, in Oban, Lorn and Inner Isles, 2017

Age band	Female	Male	Total
0-4	384	400	784
5-9	452	448	900
10-14	360	404	764
15-19	481	434	915
20-24	480	499	979
25-29	413	411	824
30-34	405	403	808
35-39	450	466	916
40-44	520	428	948
45-49	570	578	1148
50-54	685	635	1320
55-59	681	638	1319
60-64	563	579	1142
65-69	568	554	1122
70-74	473	453	926
75-79	373	320	693
80-84	260	164	424
85-89	184	92	276
90+	105	29	134
<b>Total</b>	<b>8407</b>	<b>7935</b>	<b>16342</b>

Source: National records of Scotland, 2018. Mid-2017 Small Area Population Estimates for 2011 Data Zones. [Online]

Available at: <https://www.nrscotland.gov.uk/statistics-and-data/statistics/statistics-by-theme/population/population-estimates/2011-based-special-area-population-estimates/small-area-population-estimates/mid-2017/detailed-data-zone-tables>

[Accessed 05 09 2018].