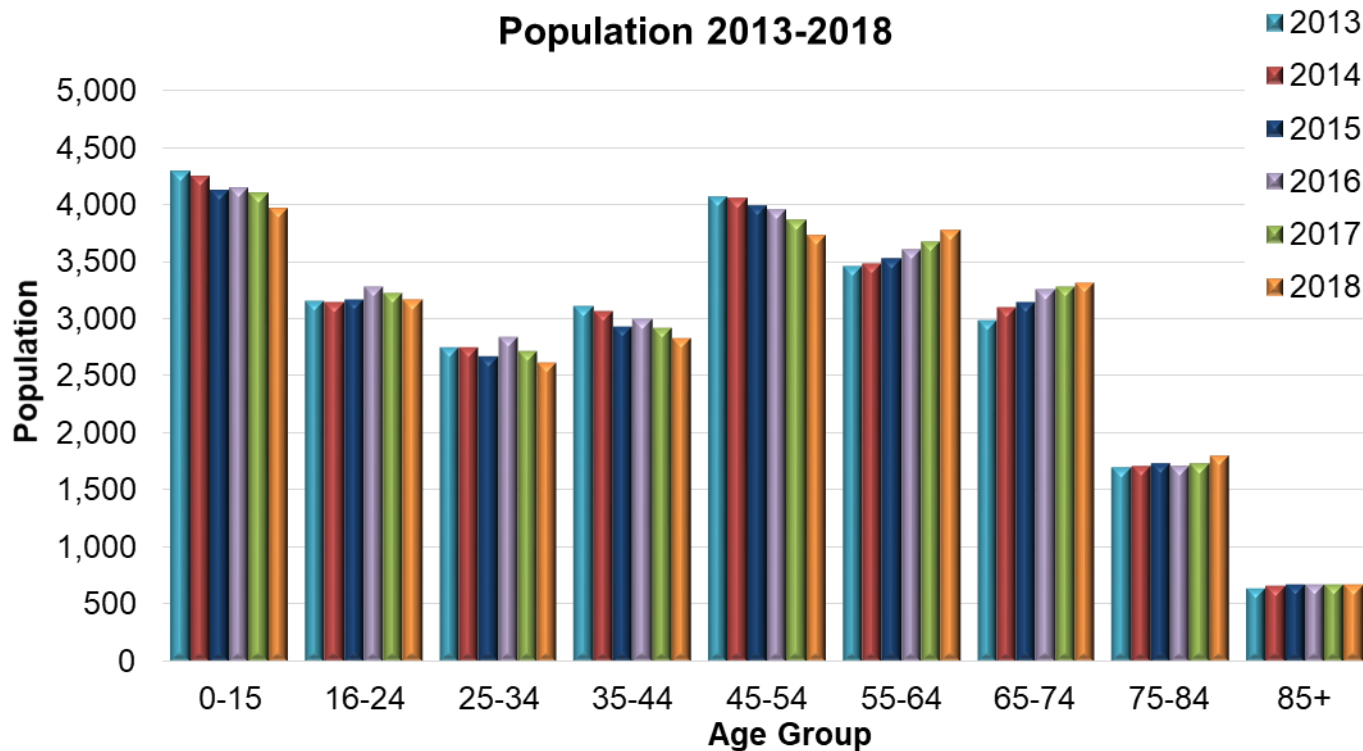
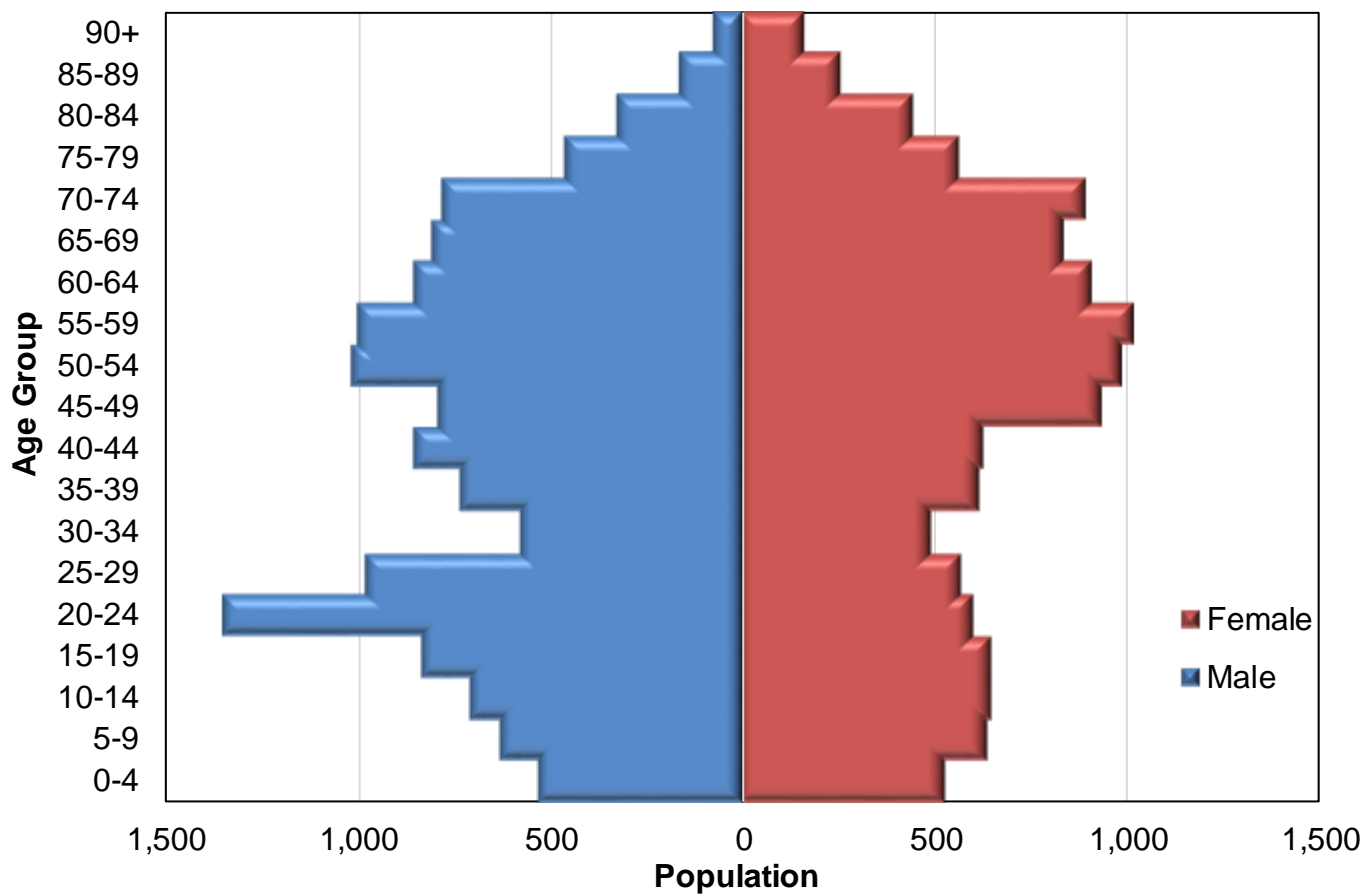


Mid-year estimates of population size in Helensburgh and Lomond



2018 Population



Number of people by age band and year, in Helensburgh and Lomond

Age Band	2013	2014	2015	2016	2017	2018
0-15	4,290	4,244	4,125	4,137	4,096	3,957
16-24	3,149	3,142	3,159	3,276	3,224	3,168
25-34	2,750	2,748	2,665	2,832	2,711	2,617
35-44	3,110	3,061	2,928	3,000	2,913	2,829
45-54	4,061	4,048	3,986	3,949	3,864	3,730
55-64	3,460	3,473	3,523	3,597	3,669	3,775
65-74	2,985	3,097	3,141	3,249	3,279	3,313
75-84	1,700	1,712	1,735	1,708	1,734	1,805
85+	640	671	672	673	674	672
Total	26,145	26,196	25,934	26,421	26,164	25,866

Number of people by 5-year age band and gender, in Helensburgh and Lomond, 2018

Age band	Female	Male	Total
0-4	527	535	1,062
5-9	637	632	1,269
10-14	646	712	1,358
15-19	649	836	1,485
20-24	602	1,349	1,951
25-29	567	981	1,548
30-34	489	580	1,069
35-39	615	733	1,348
40-44	628	853	1,481
45-49	933	792	1,725
50-54	988	1,017	2,005
55-59	1,017	1,000	2,017
60-64	905	853	1,758
65-69	833	806	1,639
70-74	892	782	1,674
75-79	564	465	1,029
80-84	444	332	776
85-89	257	171	428
90+	166	78	244
Total	12,359	13,507	25,866

Source: National records of Scotland, 2018. Mid-2018 Small Area Population Estimates for 2011 Data Zones. [Online]

Available at: <https://www.nrscotland.gov.uk/statistics-and-data/statistics/statistics-by-theme/population/population-estimates/2011-based-special-area-population-estimates/small-area-population-estimates/time-series#2018>

[Accessed 23 08 2018].