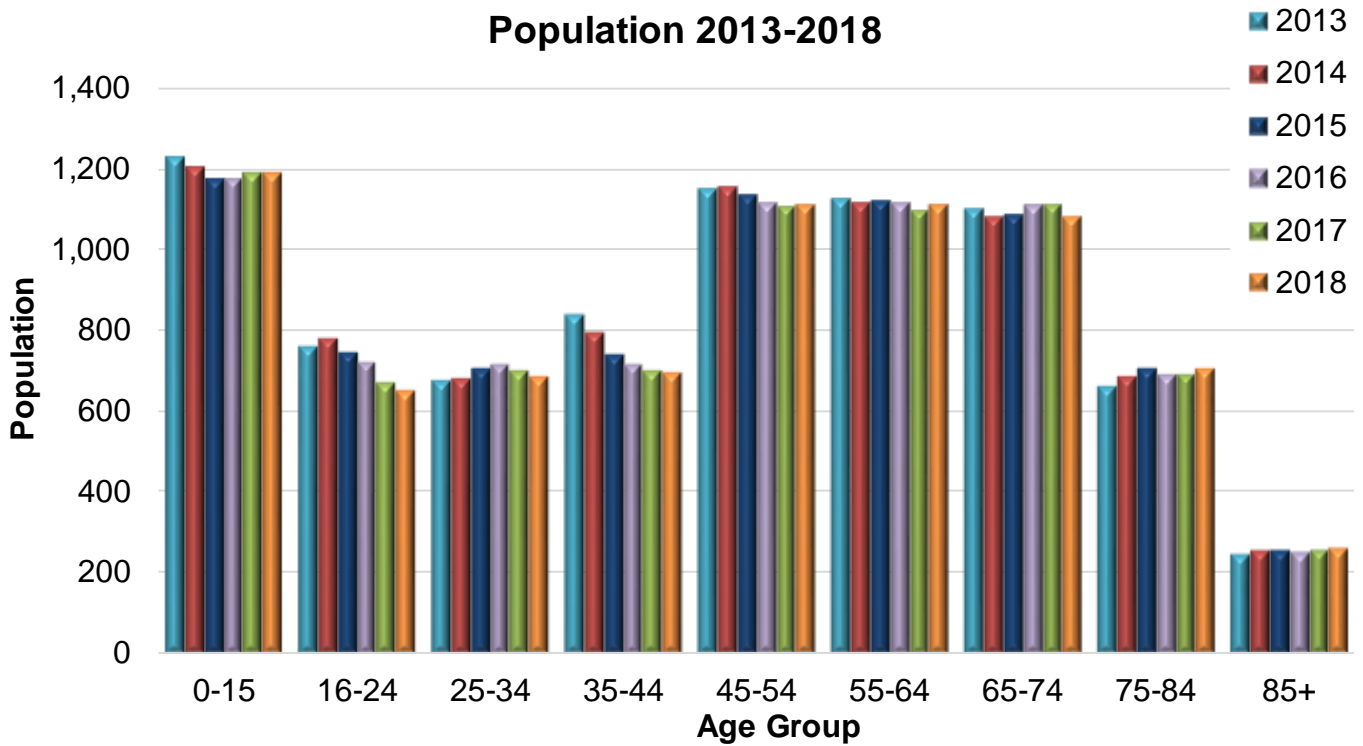
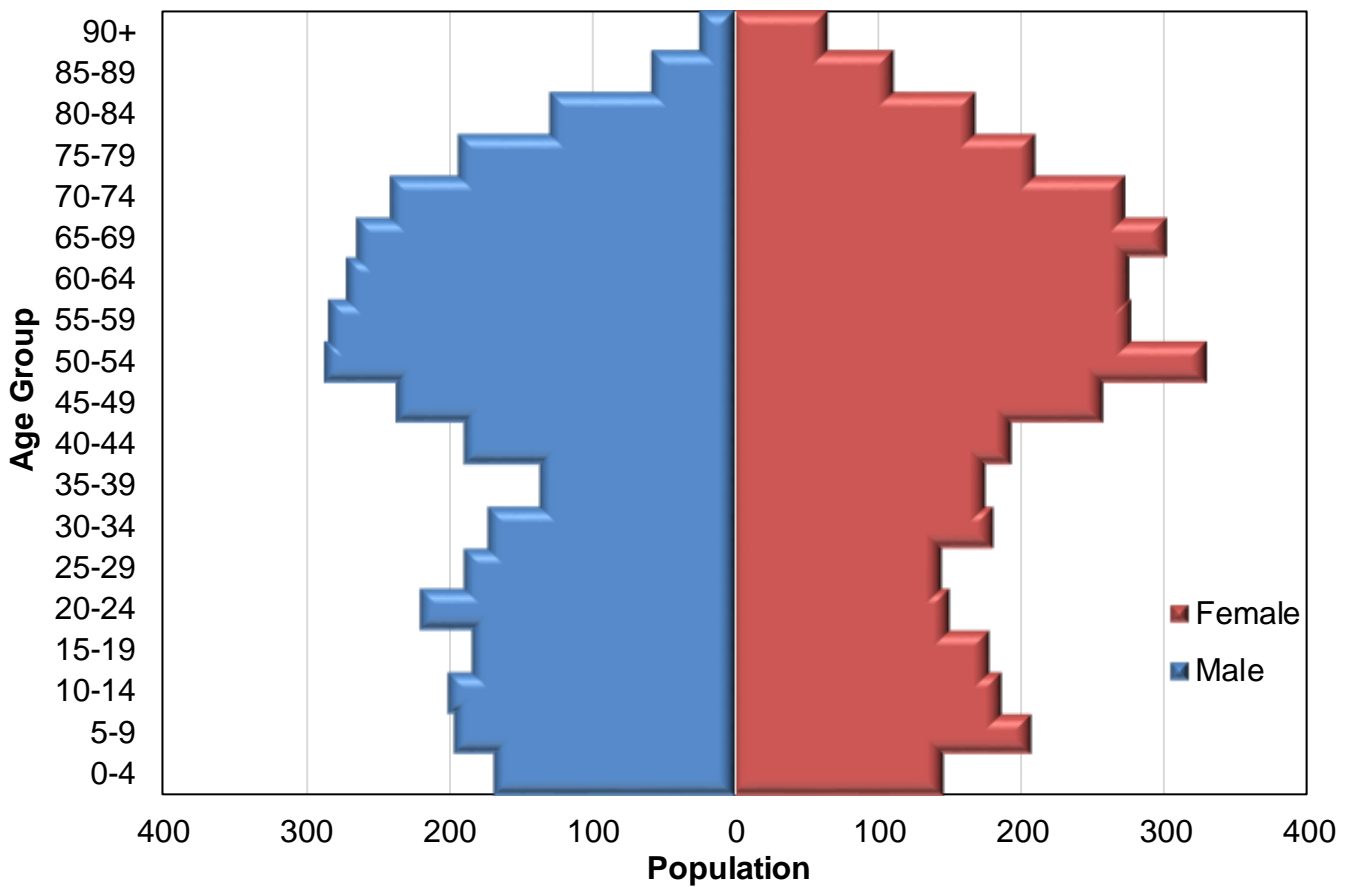


Mid-year estimates of population size in Kintyre

Population 2013-2018



2018 Population



Number of people by age band and year, in Kintyre

Age Band	2013	2014	2015	2016	2017	2018
0-15	1,228	1,203	1,173	1,171	1,185	1,186
16-24	757	779	744	721	668	650
25-34	677	678	702	715	698	687
35-44	835	791	738	715	701	695
45-54	1,146	1,154	1,133	1,111	1,103	1,109
55-64	1,123	1,115	1,117	1,111	1,091	1,106
65-74	1,099	1,079	1,082	1,107	1,107	1,079
75-84	659	685	702	691	691	702
85+	247	256	254	249	257	261
Total	7,771	7,740	7,645	7,591	7,501	7,475

Number of people by 5-year age band and gender, in Kintyre, 2018

Age band	Female	Male	Total
0-4	147	168	315
5-9	207	196	403
10-14	187	200	387
15-19	178	183	361
20-24	150	220	370
25-29	145	189	334
30-34	181	172	353
35-39	175	137	312
40-44	194	189	383
45-49	257	237	494
50-54	329	286	615
55-59	277	283	560
60-64	275	271	546
65-69	301	264	565
70-74	273	241	514
75-79	210	194	404
80-84	169	129	298
85-89	111	59	170
90+	66	25	91
Total	3,832	3,643	7,475

Source: National records of Scotland, 2018. Mid-2018 Small Area Population Estimates for 2011 Data Zones. [Online]

Available at: <https://www.nrscotland.gov.uk/statistics-and-data/statistics/statistics-by-theme/population/population-estimates/2011-based-special-area-population-estimates/small-area-population-estimates/time-series#2018>

[Accessed 23 08 2018].