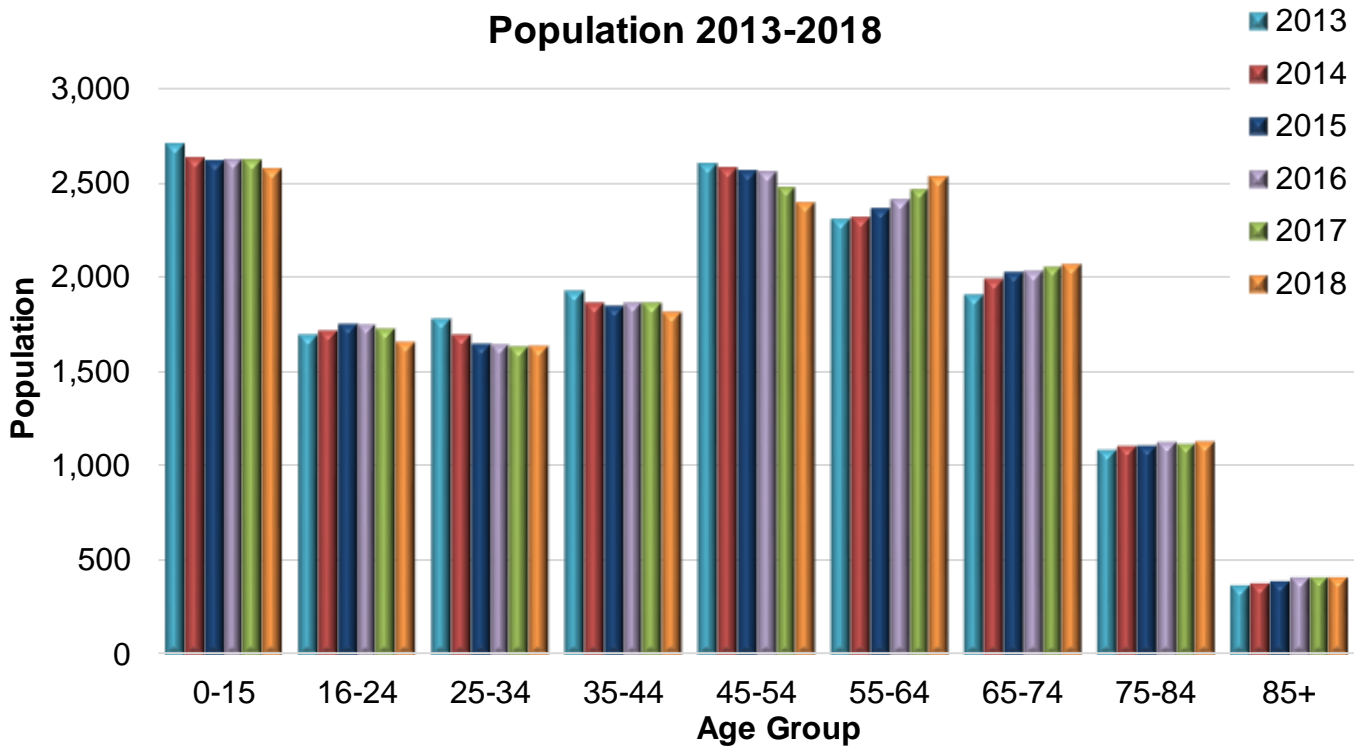
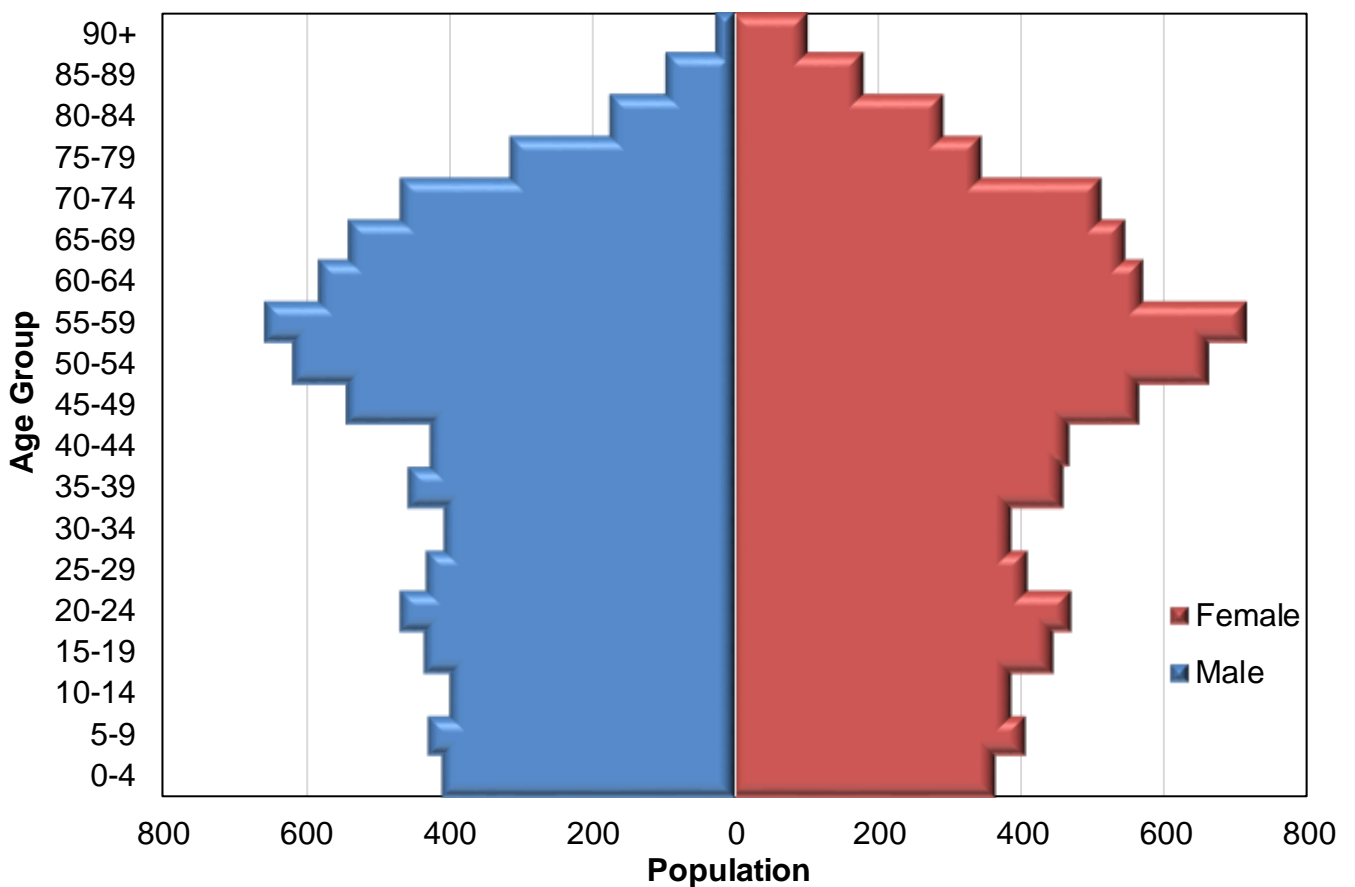


Mid-year estimates of population size in Oban, Lorn and Inner Isles

Population 2013-2018



2018 Population



Number of people by age band and year, in Oban, Lorn and Inner Isles

Age Band	2013	2014	2015	2016	2017	2018
0-15	2,700	2,628	2,609	2,614	2,614	2,562
16-24	1,688	1,712	1,741	1,744	1,728	1,653
25-34	1,776	1,696	1,638	1,636	1,632	1,632
35-44	1,924	1,862	1,839	1,865	1,864	1,808
45-54	2,602	2,579	2,559	2,555	2,468	2,386
55-64	2,302	2,309	2,353	2,411	2,461	2,523
65-74	1,901	1,990	2,021	2,034	2,048	2,065
75-84	1,078	1,106	1,105	1,125	1,117	1,128
85+	371	377	391	410	410	411
Total	16,342	16,259	16,256	16,394	16,342	16,168

Number of people by 5-year age band and gender, in Oban, Lorn and Inner Isles, 2018

Age band	Female	Male	Total
0-4	365	408	773
5-9	407	429	836
10-14	388	399	787
15-19	446	435	881
20-24	470	468	938
25-29	410	430	840
30-34	386	406	792
35-39	460	455	915
40-44	467	426	893
45-49	564	543	1,107
50-54	661	618	1,279
55-59	714	656	1,370
60-64	571	582	1,153
65-69	546	538	1,084
70-74	513	468	981
75-79	344	314	658
80-84	293	177	470
85-89	183	97	280
90+	103	28	131
Total	8,291	7,877	16,168

Source: National records of Scotland, 2018. Mid-2018 Small Area Population Estimates for 2011 Data Zones. [Online]

Available at: <https://www.nrscotland.gov.uk/statistics-and-data/statistics/statistics-by-theme/population/population-estimates/2011-based-special-area-population-estimates/small-area-population-estimates/time-series#2018>

[Accessed 23 08 2018].

